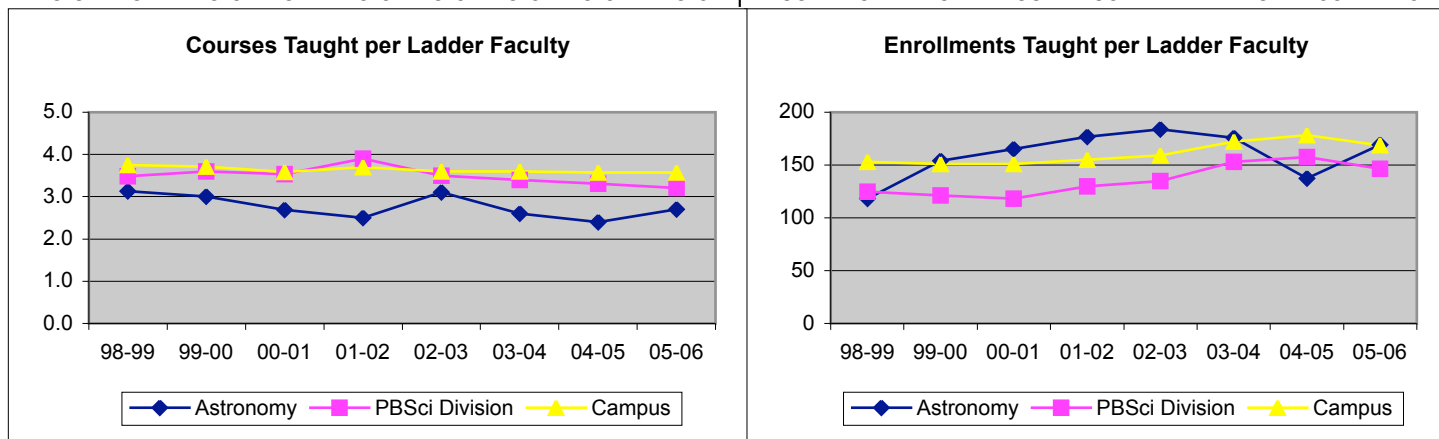


**Ladder Rank Payroll Faculty Courseload and Enrollment History**  
**(Excludes Instruction Offered by Non-Ladder Rank Faculty)**  
Revised June 2007

	Number of <u>Courses</u> Taught per Ladder Rank FTE									Total <u>Enrollments</u> Taught Per Ladder Rank FTE								
	98-99	99-00	00-01	01-02	02-03	03-04	04-05	05-06	Ave	98-99	99-00	00-01	01-02	02-03	03-04	04-05	05-06	Ave
<b>Astronomy</b>	3.1	3.0	2.7	2.5	3.1	2.6	2.4	2.7	2.8	118	154	165	177	184	176	138	169	160
Biology	3.8	4.4	4.5	4.7	4.4	4.8			4.4	117	124	119	112	134	160			128
EE Biology							4.8	4.4	4.6						147	138		143
MCD Biology							3.8	3.2	3.5						212	177		194
Chemistry	4.3	3.9	3.8	4.2	3.2	3.5	3.3	3.3	3.7	193	170	134	176	171	219	228	224	189
Earth Science	3.1	2.9	3.0	3.2	2.8	2.7	2.8	2.7	2.9	111	104	101	99	118	139	155	128	119
Environmental Toxicology				4.6	4.3	4.1	3.0	2.9	3.8				65	58	52	66	55	59
Mathematics	3.3	3.3	3.3	3.7	3.7	3.0	3.5	3.7	3.4	77	66	111	146	97	115	149	99	108
Ocean Science	3.0	2.4	2.6	2.9	2.5	2.2	1.9	2.1	2.5	112	99	99	93	141	147	63	85	105
Physics	2.6	3.3	2.9	3.4	3.4	2.8	3.1	3.2	3.1	126	123	112	124	143	125	137	138	129
Science Communicator	1.9	1.3	2.5	2.0	2.0	2.0	2.0	0.0	1.7	44	35	50	38	43	46	48	0	38
PBS General	3.6	3.5	3.0	3.0	4.1	3.4	3.0	3.0	3.3	95	87	85	46	45	30	19	12	52
<b>PBSci Division</b>	3.5	3.6	3.5	3.9	3.5	3.4	3.3	3.2	3.5	125	121	118	130	135	153	158	147	136
<b>Campus</b>	3.8	3.7	3.6	3.7	3.6	3.6	3.6	3.6	3.6	153	151	151	155	159	172	178	169	161



Definition of Terms (See Course Audits for comprehensive definitions)  
**Ladder Rank Payroll Faculty FTE** - full-time equivalent ladder rank faculty appointed to the department, adjusted for leaves, sabbaticals, Department Chair and/or Academic Senate service. Includes Security of Employment appointments.  
**Courses**- Includes all regularly scheduled, credited courses offered by department ladder faculty.  
**Enrollments** -enrollments associated with those courses taught by ladder faculty, including independent study enrollments.